



CHAINWAY[®]

Leading to an Intelligent Future

Who We Are

CHAINWAY®

As a leading "Internet of Things" company in China, Shenzhen Chainway Information Technology Co., Ltd. is a professional provider of products and solutions of RFID and barcode technologies. Chainway is devoted to helping enterprises improve efficiency, contain operation costs and move towards big data era.

What We Do

CHAINWAY®

We are specialized in handheld computers, UHF RFID products, industrial tablets, biometric products, vehicle computers as well as software.

Our portfolio of products are configured with abundant functions to meet needs of multiple industries.



Handheld Computers



UHF RFID Products



Industrial Tablet



Biometric Products



Vehicle Computers



Software

How We Do It

Through our nationwide offices, overseas subsidiary and an extensive partner network, we aim to provide high quality service to our clients.

5000+

Over 5000 Customers

130+

Customers from over 130 countries

Europe

| | |
|----------------|-------------|
| Belgium | Bulgaria |
| Czech Republic | Denmark |
| France | Germany |
| Greece | Italy |
| Netherlands | Poland |
| Portugal | Russia |
| Spain | Switzerland |
| United Kingdom | Ukraine |

China

| | |
|---------|-----------|
| Beijing | Chongqing |
| Guizhou | Hangzhou |
| Harbin | Shanghai |
| Wuhan | Xi'an |
| Yunnan | |

India

Shenzhen

Americas

| | |
|------------|-----------|
| Argentina | Brazil |
| Chile | Colombia |
| Costa Rica | Guatemala |
| Mexico | Peru |
| Uruguay | USA |

Africa

| |
|--------------|
| Morocco |
| Nigeria |
| South Africa |

Asia

| | |
|------------|-------------|
| Azerbaijan | Hong Kong |
| Israel | Korea |
| Malaysia | Philippines |
| Qatar | Singapore |
| Taiwan | Thailand |
| Turkey | UAE |
| Vietnam | |

Oceania

| |
|-------------|
| Australia |
| New Zealand |

Our Customers

| Logistics | | Retail | | E-Commerce | Warehousing | Energy | Finance | Government |
|--|--|--|--|--|--|--|---|---|
|  DHL |  汉莎航空 |  可口可乐 |  Louis Vuitton LV |  印度Flipkart |  HUAWEI 华为 |  SINOPEC 中石化 |  中国工商银行 中国工商银行 |  The West African Examinations Council 西非WAEC |
|  中国邮政 中国邮政 |  中国一汽/上海大众 |  KFC |  LACOSTE Lacoste |  苏宁易购 苏宁易购 |  Panasonic ideas for life 松下 |  国家电网 |  Banco de Bogotá 哥伦比亚波哥大银行 |  SEDESOL 墨西哥社会发展部 |
|  TNT |  德国铁路DB |  Carrefour 家乐福 |  La Chapelle 拉夏贝尔 |  唯品会 vip.com 唯品会 |  中国移动 China Mobile 中国移动 |  中国南方电网 CHINA SOUTHERN POWER GRID 南方电网 |  SBV 南非SBV |  INTERPOL 哥伦比亚国际刑警 |
|  菜鸟物流 |  中國東方航空 CHINA EASTERN 中国东方航空 |  宜家IKEA |  GIVENCHY PARIS 纪梵希 |  LOTTE 韩国乐天 |  SONY 索尼 Sony |  中粮 COFCO 中粮 |  СБЕРБАНК 俄罗斯SBERBANK |  土耳其农业部 |
|  京东 JD.COM 多快好省 |  东风汽车 东风汽车 |  必胜客 |  雅戈尔 YOUNGOR 雅戈尔 |  俄罗斯电商DNS |  HONDA The Power of Dreams 本田Honda |  中国烟草 CHINA TOBACCO 中国 |  中国人民银行 THE PEOPLE'S BANK OF CHINA 中国人民银行 |  哥伦比亚交通部 |
|  SAFEXPRESS Distribution Redefined 印度Safexpress |  dpd DPD |  Hennessy 轩尼诗红酒 |  JNBY 江南布衣 |  M.Video ком не всё равно 俄罗斯M-Video |  HIKVISION 海康威视 |  EVN 越南中央电力 |  中国銀行 BANK OF CHINA 中国银行 |  泰国皇家农业部特首管理部门 |
|  sto 申通快递 申通快递 |  MTR 心繫生活每一程 香港地铁 |  FamilyMart 台湾全家 |  PEACEBIRD 太平鸟 |  SOUQ.com 阿联酋SOUQ |  ByteDance 字节跳动 头条 今日头条 |  ENERGO-PRO 保加利亚电力 |  汇丰 香港汇丰银行 |  SOCHI 2014 索契冬奥会 |
|  博世 博世 |  新加坡Sembawang Shipyard |  Hisense 海信 |  Fast Fish 快鱼服饰 |  毛豆 毛豆 毛豆新车网 |  DAIKIN 大金制冷 |  中国神华 CHINA SHENHUA 中国神华 |  中信銀行 CHINA CITIC BANK 中信银行 |  圣彼得堡国际经济论坛 |
|  LIBANPOST 黎巴嫩邮政 |  摩洛哥皇家航空 ROYAL AIR MAROC 摩洛哥皇家航空 |  周六福 ZHOU LIU FU 周六福 |  银泰 YINTAI 银泰 |  瓜子 二手车直卖网 瓜子 |  海螺水泥 CONCH 海螺水泥 |  GDH 粤港供水 香港供水 |  安邦 ANBANG 安邦护卫 |  广州亚运会 |
|  莫桑比克邮政 |  EcoTelematics Group 芬兰汽车集团 |  SIES 法国SES |  Honeywell 海王星辰 |  快麦 杭州淘麦 |  华水水泥 CR CEMENT 华水水泥 |  申中气体 申中气体 |  江苏农村商业银行 BANK OF JIANGNAN 江南银行 |  CHINA OPEN 中国网球公开赛 |
|  ALLIED EXPRESS SPECIALISED LOGISTICS 澳大利亚Allied Express快递 |  杭州地铁 HANGZHOU METRO 杭州地铁 |  百果园 百果园 |  益海嘉里 |  SISS 思迅软件 思迅软件 |  sofitec 西捷牙航空精密制造 |  建龙集团 JIANLONG GROUP 建龙集团 |  赣州银行 BANK OF GANCHOU 赣州银行 |  Disneyland PARIS 法国迪士尼 |

CHAINWAY®

Our Products





Handheld Computers



MC95 Handheld Computer

- Android 12
- Superior Barcode Scanning
- NFC
- Rear & Front Cameras
13 MP / 5 MP
- 5000mAh Removable Battery
- Highly Rugged and Durable
IP67



MC50 Handheld Computer (5G)

- WWAN: 5G
- Android 12, Qualcomm Snapdragon™ 480 Octa-core, 2.0 GHz
- RAM+ROM: 4GB+64GB
- Size: 161*77.8*15.5mm
- Battery: 5000mAh Removable Battery,
Built in 100mAh backup battery,
Supporting Quick Charge and RTC
- Functions (Some Are Optional) :
Barcode Scanning / NFC / Front and Rear Camera



C66 Handheld Computer

- Android 11
- Qualcomm Snapdragon™ 662 Octa-core, 2.0GHz
- 5.5" IPS Display (18:9)
- Removable 4420 / 5200mAh Battery
- Support QC 3.0 18 W Quick Charge
- Support Trigger Handle, Extended 5200mAh Battery
- Wi-Fi 6-ready
- Functions (Some Are Optional) :
Barcode Scanning / UHF RFID / Fingerprint Recognition (TCS1) /
Volume Measurement / NFC / Camera





C66 Accessories

Single Charging Cradle



4-Slot Battery Charger



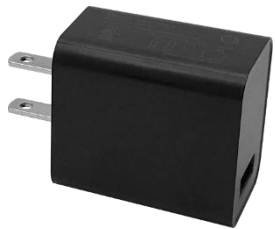
Trigger Handle Battery Charger



Single Charging Cradle



QC Adapter



Rugged Rubber Boot





C66 Accessories

Vehicle Charge Cradle



Rubber Bumper



Hand Strap



Screen Protector



Pistol Grip



Battery



4-Slot Charging Cradle Charging & Adapter



C61 Handheld Computer

- Android 11
- Qualcomm Snapdragon™ 662 Octa-core, 2.0 GHz
- RAM+ROM: 3GB+32GB / 4GB+64GB
- 6700mAh Removable Main Battery
- Optional Trigger Handle (Extended 5200mAh Battery)
- QC 3.0 Quick Charge, Battery Hot Swap , RTC
- Functions (Some Are Optional) :
Barcode Scanning / UHF RFID / NFC / Camera
- Cold Storage Version:
Operating Temp. : -22 °F to 122 °F / -30 °C to 50 °C
Storage Temp. : -40 °F to 158 °F / -40 °C to 70 °C





C61 Accessories

QC Adapter



2-Slot Battery Charger



Trigger Handle Battery Charger



Hand Strap



Rugged Rubber Boot



Pistol Grip



Battery



Charging Cradles & Adapters



4-Slot Charging Cradle Charging & Adapter



C71 Handheld Computer

- Android 11
- Cortex-A53 Octa-core, 2.3GHz
- RAM+ROM: 3GB+32GB / 4GB+64GB
- 5.2-inch 1080p FHD Display
- 5000mAh Battery
- Functions (Some Are Optional) :
Barcode Scanning / NFC / HF RFID / Built-in RFID /
Fingerprint Recognition (TCS1 / TCS2 / Optical) / PSAM /
Camera



TCS1



TCS2



Optical



C90 Handheld Computer

- Android 10
- Cortex-A53 Octa-core, 2.0GHz
- RAM+ROM: 3GB+32GB / 3GB+64GB / 4GB+64GB
- Dimensions: 158.5 x 76.0 x 13.1mm
- Display: 5.7-inch (18:9) , IPS LTPS 1440 x 720
- Main Battery: Built-in 5000mAh
- Functions (Some Are Optional) :
Barcode Scanning / NFC / Front and Rear Camera



C6000 Handheld Computer

- Android 10, Cortex-A53 Octa-core, 2.0GHz
- RAM+ROM: 3GB+32GB / 2GB+16GB
- 157.6 x 73.7 x 29mm
- 4-inch Display (480 x 800)
- 2m Drop Proof / IP65
- 4200mAh Removable Main Battery
- Functions (Some Are Optional) :
Barcode Scanning / NFC / Camera



C70 Handheld Computer

- Android 11, Cortex-A53 Octa-core, 2.3GHz
- RAM+ROM: 3GB+32GB / 4GB+64GB
- 163.8 x 79.2 x 13.8mm
- 5.2-inch 1080p FHD Display
- 1.8m Drop / IP65/67
- 4000mAh Battery
- Functions (Some Are Optional) :
Barcode Scanning / NFC / Iris Scanning / Camera /
Infrared Thermometer





Mobile Computer with Printer

C75 Handheld Computer with Printer

- Android 11
- Cortex-A53 Octa-core, 2.3GHz
- RAM+ROM: 3GB+32GB / 4GB+64GB
- 186.9 x 84.0 x 35.0-49.5mm
- 5.2-inch 1080p FHD Display
- IP54
- 8000mAh Battery
- Functions (Some Are Optional) :
Thermal Printing / Barcode Scanning / NFC / PSAM / Camera



CHAINWAY®

UHF RFID Readers

Handheld / Wearable / Fixed





Handheld RFID Readers



C5 Handheld RFID Reader

- Android 11
- Based on Impinj E710
More Powerful UHF RFID Performance
- 6" Large Screen, Better Visual Experience
5" Screen + Fingerprint Recognition
Maximum Data Security
- 13MP Rear Camera and 5MP Front Camera
- Dual PSAM
- Barcode Scanning (Optional)
- NFC (Optional)
- 6700/13400mAh Removable Battery
- Rugged Ergonomic Design
IP65 / 1.5m Drop Proof



C66 Handheld RFID Reader

- Android 11
- Qualcomm Snapdragon™ 662 Octa-core, 2.0GHz
- RAM+ROM: 3GB+32GB / 4GB+64GB
- 5.5" Display (18:9)
- 4200mAh Removable Main Battery, 5200mAh Pistol Battery
- Support QC3.0 and RTC, Charging Time: Only 2.5 Hours
- UHF RFID:
CM710-1 / CM2000-1 Module Based on Impinj E710 / Indy R2000
Read Range: >32m (Depends on Tags and Environment)
- Other Functions (Some Are Optional) : Barcode Scanning / NFC / Camera



**C66
RFID**



C66 + R6 Sled



C61 Handheld RFID Reader

- Android 11
- Qualcomm Snapdragon™ 662 Octa-core, 2.0GHz
- RAM+ROM: 3GB+32GB / 4GB+64GB
- 27 keys / 37 keys / 47 keys
- 6700mAh Removable Main Battery
- Optional Trigger Handle, Extended 5200mAh Battery
Built in 100mAh Backup Battery, Supporting Battery Hot Swap
Support QC3.0 and RTC
- UHF RFID:
CM710-1 / CM2000-1 Module Based on Impinj E710 / Indy R2000
Read Range: >30m (Depends on Tags and Environment)
- Other Functions (Some Are Optional) :
Barcode Scanning / NFC / Camera



C72 Handheld RFID Reader

- Android 11, Cortex-A53 Octa-core, 2.3GHz
- RAM+ROM: 3GB+32GB / 4GB+64GB
- 5.2-inch 1080p FHD Display
- 8000mAh Battery
- UHF RFID:
CM710-1 / CM2000-1 Module Based on Impinj E710 / Indy R2000
Read Range: >30m (Depends on Tags and Environment)
- Other Functions (Some Are Optional) :
Barcode Scanning / NFC / Camera



Indoors



Outdoors



C66 Built-in RFID Reader

- Android 11
- Qualcomm Snapdragon™ 662 Octa-core, 2.0GHz
- RAM+ROM: 3GB+32GB / 4GB+64GB
- 160.0 x 76.0 x 17.0mm
- 5.5-inch Display
- 5200mAh Removable Main Battery
- Support QC3.0 and RTC, Charging Time: Only 2.5 Hours
- UHF RFID:
CM-5N Module Based on Impinj E510
Read Range: Up to 2.7m (Depends on Tags and Environment)
- Other Functions (Some Are Optional) :
Barcode Scanning / NFC / Camera



C71 Built-in RFID Reader

- Android 11
- Cortex-A53 Octa-core, 2.3GHz
- RAM+ROM: 3GB+32GB / 4GB+64GB
- 5.2-inch 1080p FHD Display
- 5000mAh Battery
- UHF RFID:
CM-Q; CM-3N Module Based on Impinj E310
Read Range: Up to 4m (Depends on Tags and Environment)
- Other Functions (Some Are Optional) :
Barcode Scanning / NFC / Camera



R6 RFID Sled Reader

Instantly Make Mobile Phone as Professional Data Collection Device

- SDK: Support Android / iOS
- Battery: 5200mAh Battery
- BLE
- UHF RFID:
CM710-1 / CM2000-1 Module Based on Impinj E710 / Indy R2000
Read Range: > 26m (Depends on Tags and Environment)
- Barcode Scanning (Optional)



R2 Bluetooth RFID Reader

- SDK: Support Android / iOS
- Dimensions: 282 x 117.5 x 32mm
- Display: 1.77-inch Display, 128 x 160
- Battery: 5200mAh Battery
- Communication: Bluetooth 4.0, BLE
- Storage: 50000 tags
- UHF RFID:
CM710-1 / CM2000-1 Module Based on Impinj E710 / Indy R2000
Read Range: >31m (Depends on Tags and Environment)
- Barcode Scanning (Optional)



SR160 RFID Scanner

- Main Applications: Clothing, Retail (check-out)
- Improved Ergonomic Design
- Based on Impinj E310
Excellent RFID and Barcode Scanning
- Three Operating Modes, Easy to Switch
Single Barcode scanning
Single UHF RFID Scanning
Hybrid Scanning
- Multiple Communication Methods
USB / RS-232 / Bluetooth





Wearable RFID Readers



R5 Wearable RFID Reader

- SDK: Support Android / iOS
- Dimensions: 108 x 78 x 18mm
- Sealing: IP65 / 1.2m Drop
- Battery: 2000mAh Removable Battery
- Communication: BLE / USB Type-C
- UHF RFID:
CM710-1 / CM2000-1 Module Based on Impinj E710 / Indy R2000
Read Range: > 14 m (Depends on Tags and Environment)



MR20 Wearable RFID Reader

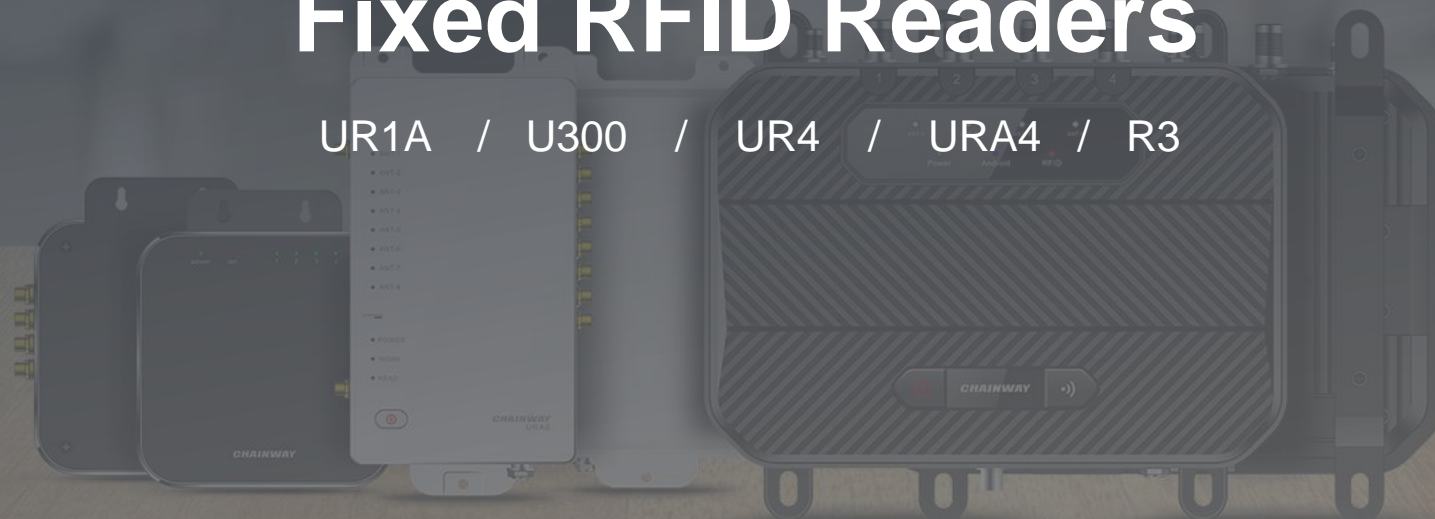
- SDK: Support Android / iOS
- Dimensions: 50 x 62 x 19mm
- Weight: 64g / 2.26oz. (With Glove: 90 g / 3.17 oz.)
- Color: Yellow, Blue, Gray
- Battery: 1200mAh Removable Battery
- Communication: Bluetooth 5.0 / USB Type-C
- UHF RFID:
CM-3N / 5N Module Based on Impinj E310 / E510
Read Range: 80cm (Depends on Tags and Environment)





Fixed RFID Readers

UR1A / U300 / UR4 / URA4 / R3



UR1A Integrated RFID Reader

- Based on Impinj E710 / R2000 chip
- Integrated High-performance Antenna, Gain: 9dBi / 6dBi
- Communication Interfaces:
RS-232, RJ45 and GPIO



U300 Fixed RFID Reader

- Android 11
- CPU: Quad-core, 2.0GHz
- Based on the Impinj E710/ R2000 chip
- Integrates RS232, RJ45, HDMI and Other Interfaces
- Power Supplies: Supports DC, POE, POE+



UR4 Fixed RFID Reader

- Dimensions: 102.8 x 102.8 x 28mm
- Interface: RS-232, RJ45, GPIO
- Power: DC (12V)
- UHF RFID:
CM710-4 Module Based on Impinj E710
CM2000-4 Module Based on Impinj Indy R2000



URA4 Fixed RFID Reader

- Operating System: Android 9
- CPU: Qualcomm Octa-core, 1.8GHz
- RAM+ROM: 2GB+16GB / 3GB+32GB
- Dimensions: 214 x 148 x 30mm
- Interface: HDMI, RS-232, RJ45, USB 2.0 Type A,
• USB Type-C, USB Host, GPIO
- Communication: Support 4G / Wi-Fi
- Power: DC (12V) / POE / POE+
- UHF RFID:
CM710-4 Module Based on Impinj E710
CM2000-4 Module Based on Impinj Indy R2000



R3 Desktop RFID Reader

- SDK: Support Windows / Android / iOS
- Dimensions: 318 x 318 x 20mm
- Sealing: IP65
- Communication: Bluetooth 4.0, BLE, USB Type-C
- Power: USB Type-C
- UHF RFID:
Read Range: 0 - 50cm (Depends on Tags and Environment)



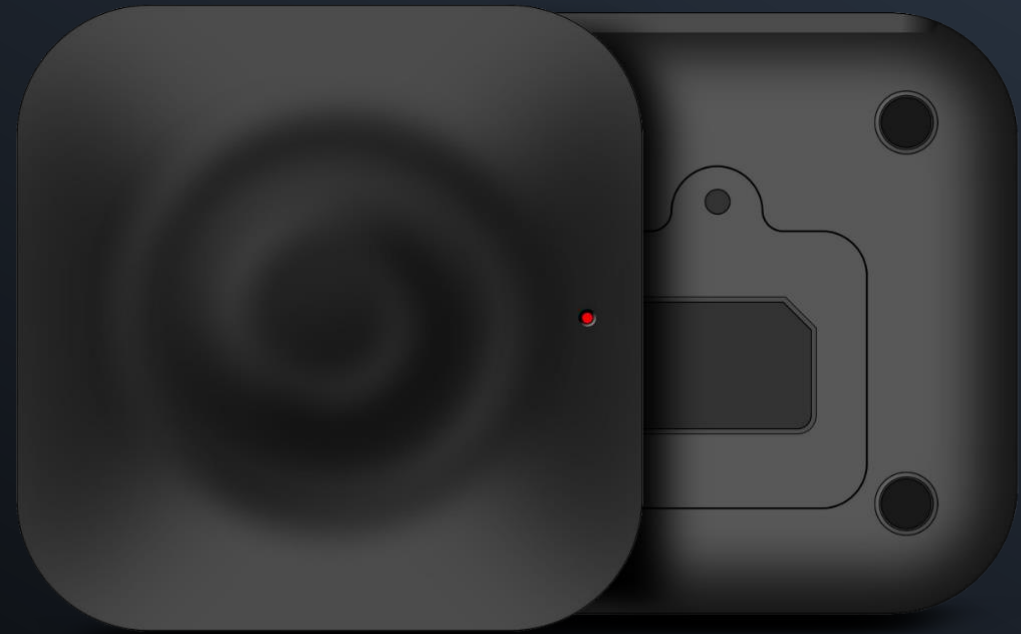


RFID Reader/Writer

R1

R1 RFID Reader/Writer

- Main Applications: Logistics, Access Control, Anti-counterfeiting and Production Process Control
- Support for Windows and Linux
- Excellent UHF RFID Performance
Based on Impinj E310
- HF RFID
- PSAM



CP30 RFID Printer

- Available in Thermal Transfer and Direct Thermal
- Maximum Print Speed
8ips (203dpi) / 6ips (300dpi)
- 3.5" LCD Touch Display
- Support Multiple Interfaces
Standard: USB, USB host, Ethernet
Optional: Wi-Fi, Bluetooth
- Automatic Printhead Resolution Identification
203dpi / 300dpi



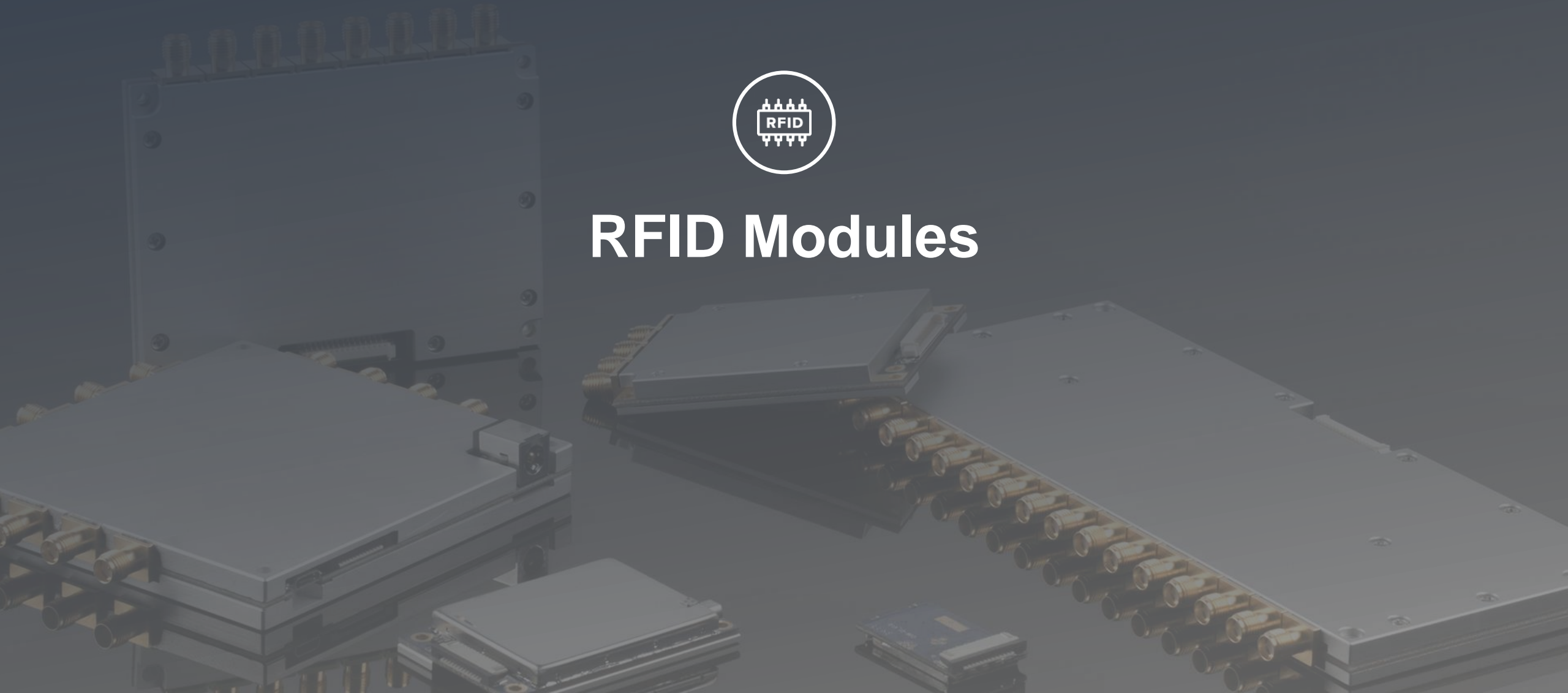
CP20 Barcode Printer

- Max. Printing Speed:Up to 152mm/s(6ips)
- TSPL / ZPL / EPL / DPL Emulation Are Supported
- Various interfaces:
USB / Ethernet / Serial Port /BT / WIFI
- Adjustable Mechanism for Printing Head Pressure
- Up to 300m Ribbon, Adjustable Mechanism for Ribbon Wrinkle
- Seagull Driver Supported
- Thermal Transfer / Direct Thermal





RFID Modules



RFID Modules

Deliver **Accurate & Instant Multi-tag**
Reading Results

Features

- Industry-leading Impinj E710/E510/E310/R2000 Chip
- Excellent Reading Performance
- Strong Stability and Monitoring System
- Superior Heat Dispersion Capacity
- Low Power Consumption
- Outstanding Consistency
- Easy Application Development



1 Channel



4 Channel



8 Channel



16 Channel

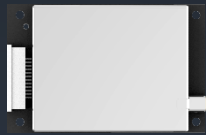


Compact



Nano

RFID Modules (Impinj E710 chip)



CM710-1



CM710-4



CM710-8



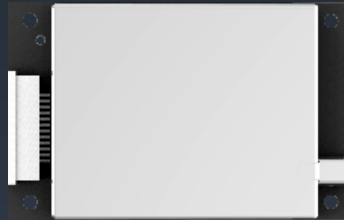
CM710-16



CM-7N



RFID Modules (Impinj E510 chip)



CM510-1



CM-5N



RFID Modules (Impinj E310 chip)



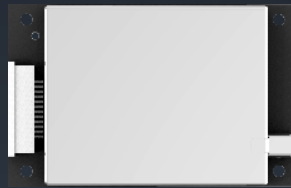
CM310-1



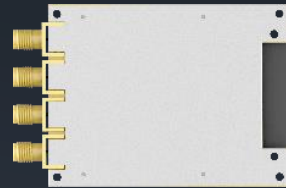
CM-3N



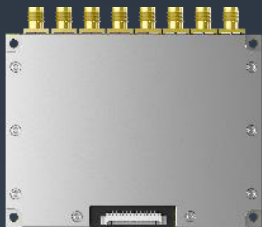
RFID Modules (Impinj Indy R2000 chip)



CM2000-1



CM2000-4



CM2000-8



CM2000-16



Industrial Tablet



P80 Industrial Tablet

- Android 9
- Qualcomm 2.0 GHz Octa-core
- RAM+ROM: 3 GB+32 GB / 4 GB+64 GB
- 250.8 x 152.0 x 15.0 mm
- 8-inch 1920 x 1200 IPS / 1280 x 800 IPS Display
- 8000 mAh Battery
- Functions (Some Are Optional) :
UHF RFID / Fingerprint Recognition (TCS1 / TCS2 / Optical) /
Barcode Scanning / NFC / HF RFID / Infrared / PSAM / Camera



P80 RFID Tablet

RFID 1 (With Pistol Grip) / RFID 2 (External):

- Engine: CM710-1 / CM510-1 / CM2000-1 Module Based on Impinj E710 / E510 / R2000
- R/W range: Up to 15 m (RFID 1) / 10 m (RFID 2)

RFID 3 (Built-in):

- Engine: CM310-1 / CM500-1 Module Based on Impinj E310 / R500
- R/W Range: Up to 30 cm

* Ranges Depend on Tags and Environment;



RFID

1



RFID

2



RFID

3

Biometrics



Fingerprint



Facial Recognition



1D / 2D



NFC

CHAINWAY
FCC ECE



Facial Recognition

Product Model

All of our products are facial recognition enabled

Demo

CHAINWAY®



Facial Recognition

Upcoming Products





MC21

Handheld Computer (coming soon)

- Android 12
- Quad-core, 2.0GHz
- RAM + ROM: 2GB + 16GB / 3GB + 32GB
- Size: 186.6 x 66.7 x 24.3mm;
- 3.5" Display, 400 x 800
- Battery: 5000mAh Removable Battery
- Functions (Some Are Optional)

Barcode Scanning / NFC / Camera





MC62

Handheld Computer (coming soon)

- Android 13
- Octa-core, 2.0GHz
- Size: 163.5 x 67.0 x 17.1mm;
- 4" Display, 480 x 800
- Battery: 5000mAh Removable Battery
- IP67, 1.5m Drop
- Functions (Some Are Optional)
Barcode Scanning / NFC / Camera



CT20 RFID Access Door (coming soon)

- Main Applications:
Inventory Management, Archives and Library Management, Retail, etc.
- Features / Functions:
Size: 1371×370×69mm / pcs
Operating System: Linux
UHF RFID: Based on Impinj R2000 / E710 Chip
- Schedule:
Sample Device: Ready
Mass Production: TBD



A conceptual illustration of 5G products. A laptop is shown at the bottom, with a glowing world map on its screen. The map is composed of a grid of dots and is surrounded by several icons representing different technologies: a key, a magnifying glass, a paperclip, a Wi-Fi signal, a location pin, a cloud, a padlock, a shield, a bar chart, and a person. The text '5G products' is prominently displayed in the center of the map, and 'In development' is written below it.

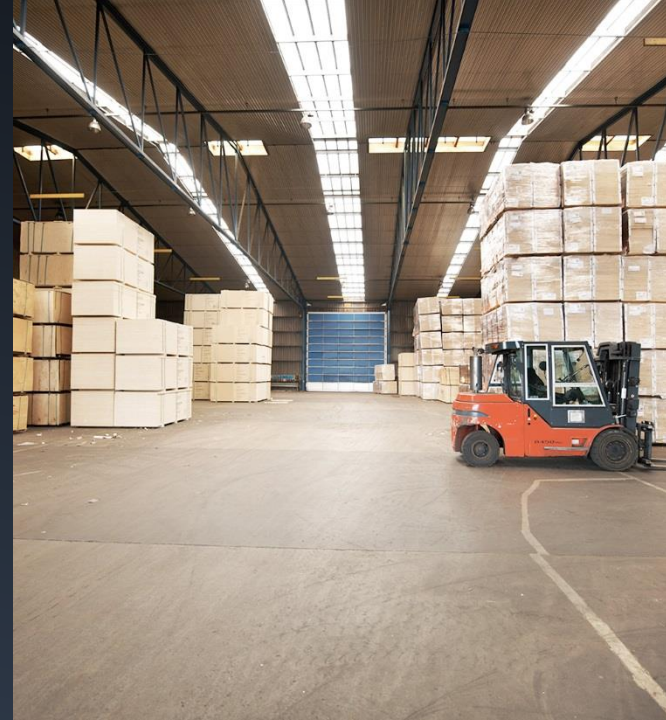
5G products

In development

A

Logistics & Warehousing

Warehousing Management
Distribution Management
Fleet Management
Asset Management



Logistics & Warehousing

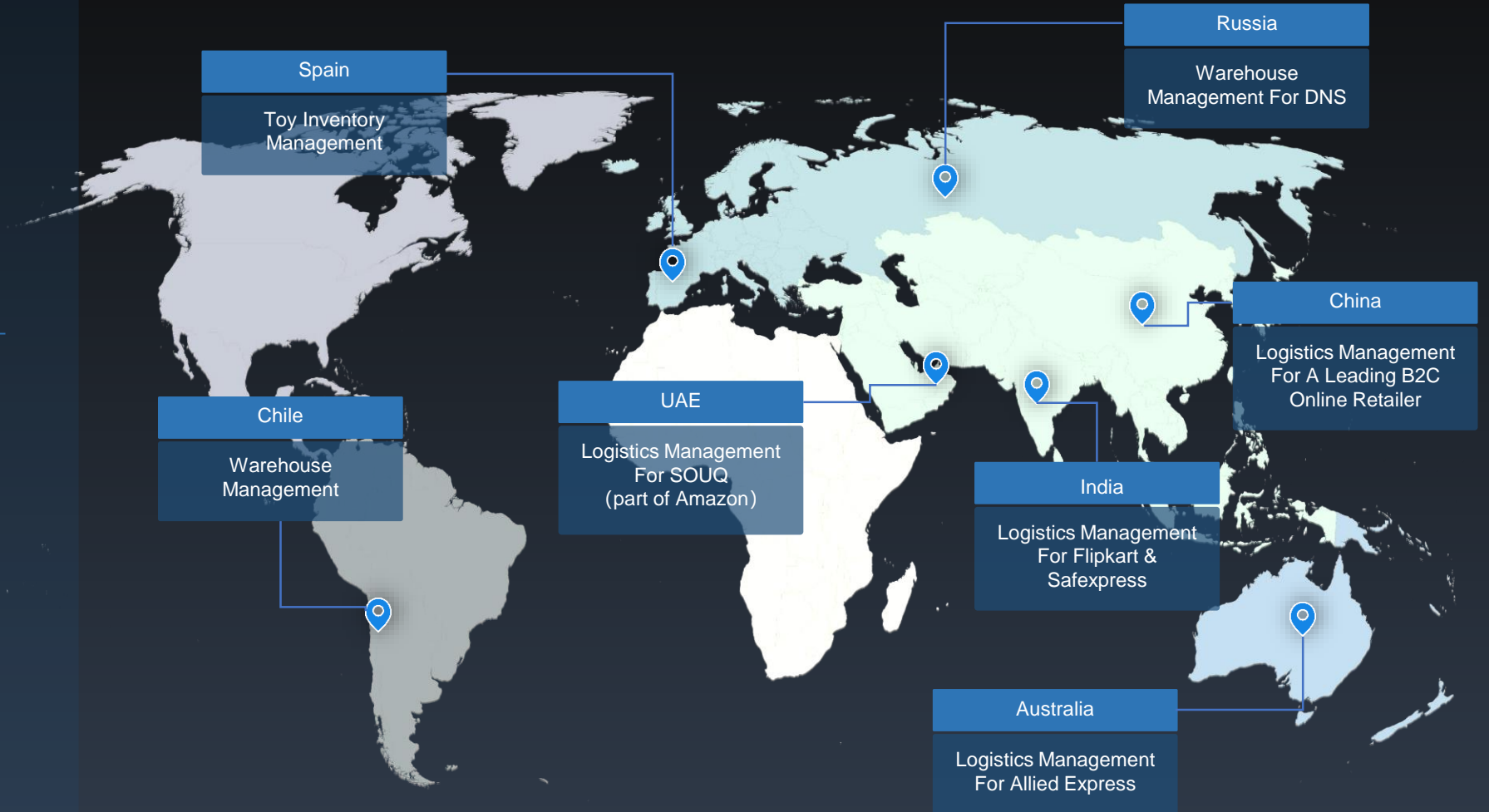
Warehousing Management

Distribution Management

Fleet Management

Asset Management

- Logistics Management For Flipkart And Safexpress In India
- Logistics Management For China's Leading B2C Online Retailer
- Warehouse Management For DNS In Russia
- Barcode Technology Application In Toy Inventory Management In Spain
- Logistics Management For Allied Express In Australia
- Logistics Management For SOUQ (part of Amazon) In UAE
- Parcel Sorting for DHL International Express Site in Dutch



B

B Retail

In-store Operations
Warehousing Management
Chain Store Management
Logistics Tracking



Retail

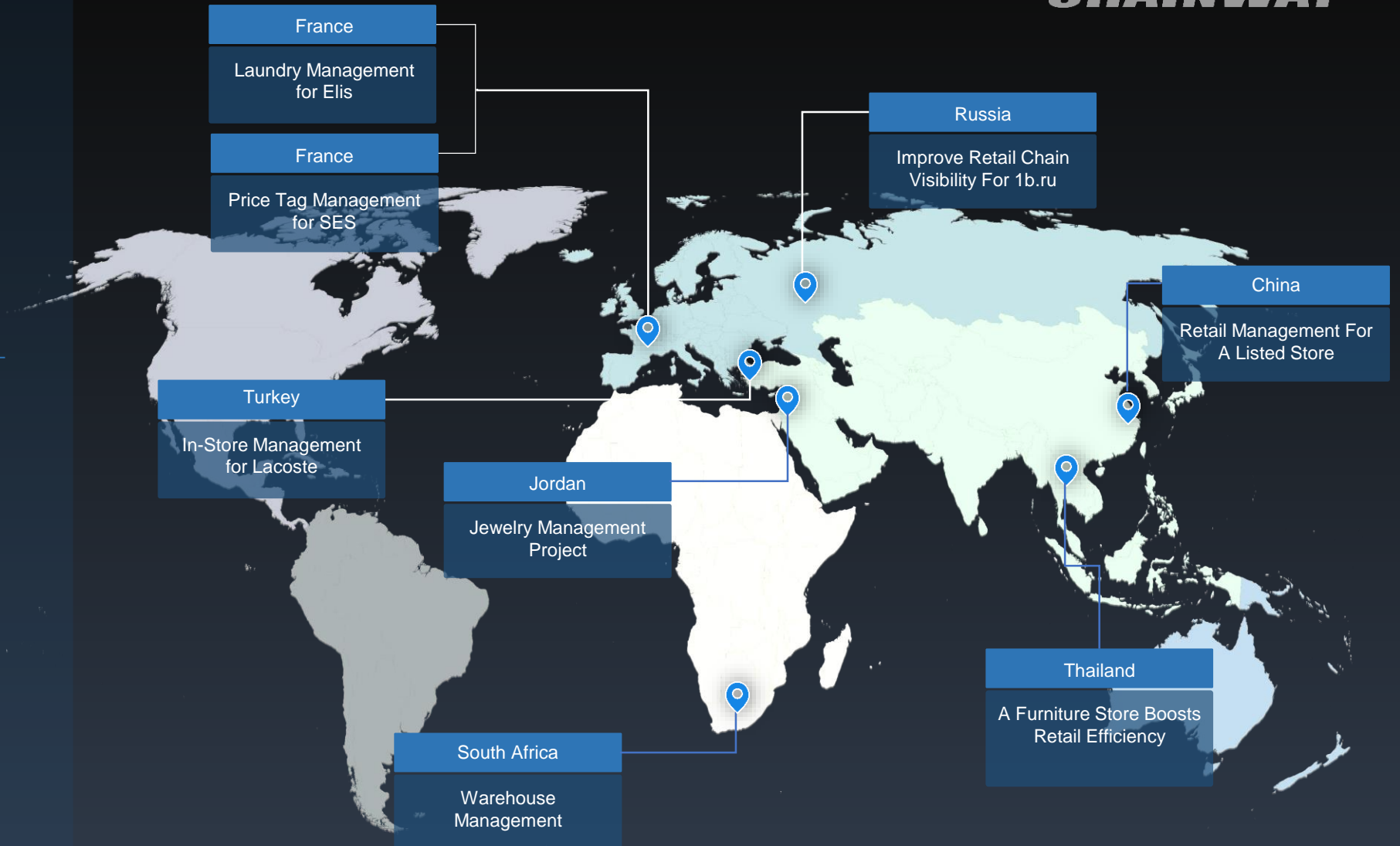
In-store Operations

Warehousing Management

Chain Store Management

Logistics Tracking

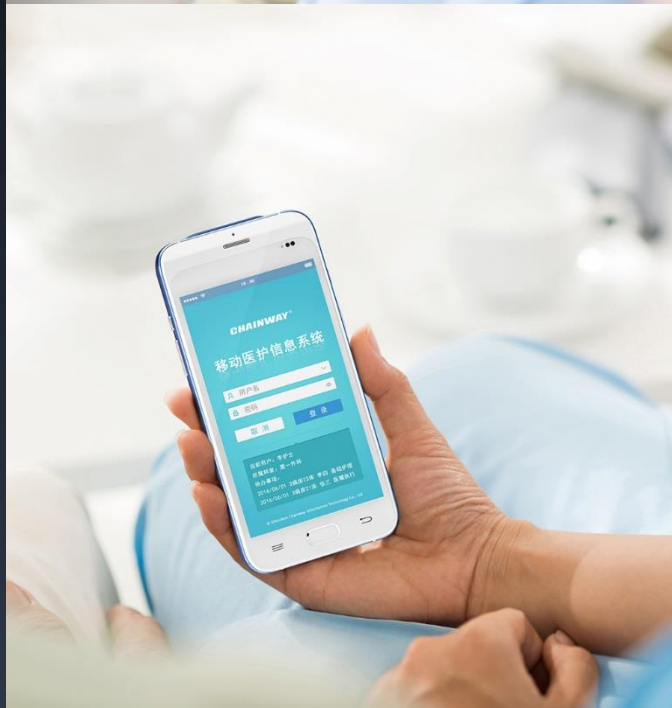
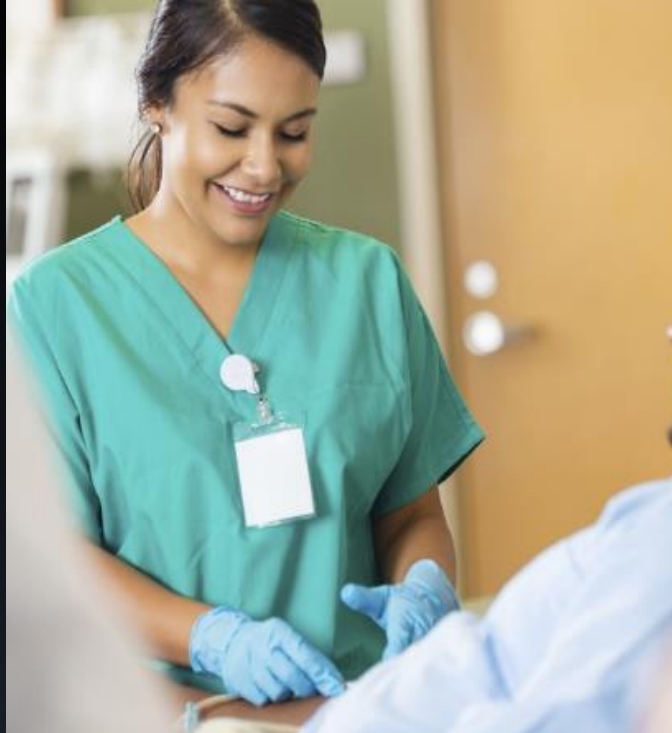
- Retail Management For A Listed Department Store In China
- A Thai Furniture Store Boosts Retail Efficiency With Chainway Handhelds
- Improve Retail Chain Visibility For 1b.ru In Russia
- A Jewelry Retailer In Jordan On Its Way To Smarter Retail Management
- Warehouse Management For A South African Retail Store
- Price Tag Management for SES
- Laundry Management for Elis
- In-Store Management of Lacoste with UHF RFID Technology



C

C Healthcare

Medication Administration
Vital Sign Collection
Information Inquiry
Personnel Management



Healthcare

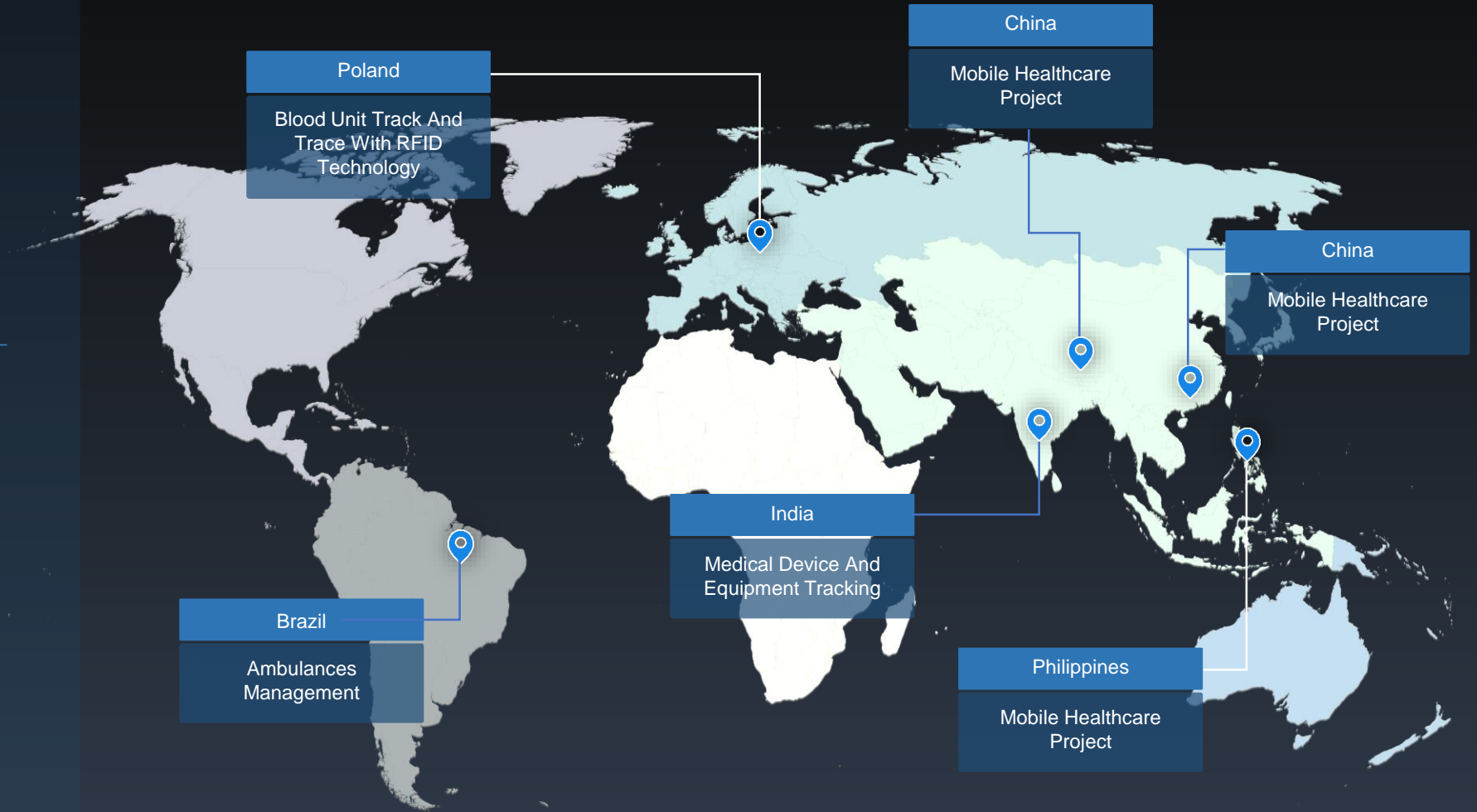
Medication Administration

Vital Sign Collection

Information Inquiry

Personnel Management

- A Brazilian Hospital Manages Ambulances With Chainway UHF RFID Readers
- Real-Time Blood Unit Track And Trace In Poland With RFID Technology
- Mobile Healthcare Project For Hospitals In China
- Track Valuable Medical Device And Equipment With Handhelds In India
- Mobile Healthcare Project In Philippines
- A Shenzhen Hospital Chooses Chainway Handheld Computer For Its Mobile Healthcare Project

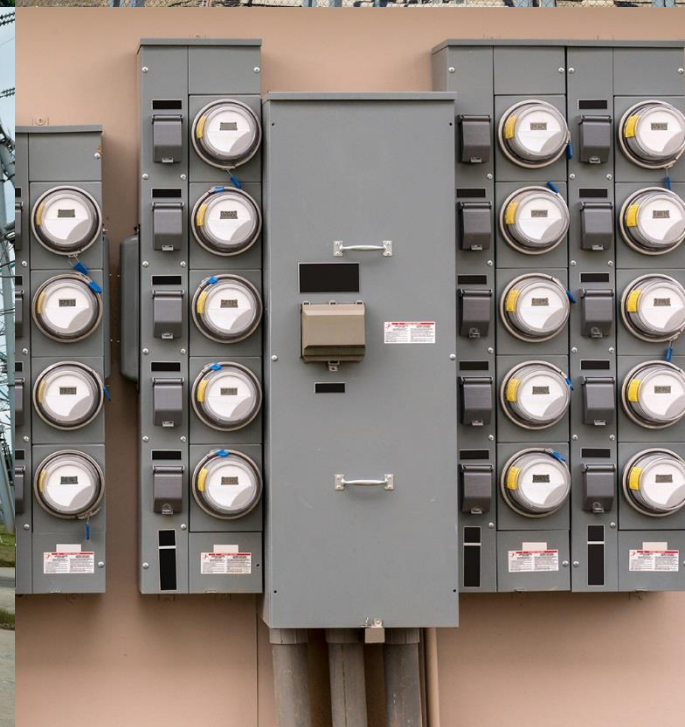


D

D

Energy

- Infrared Meter Reading
- Data Upload
- GPS Positioning
- Real-time Data Management



Energy

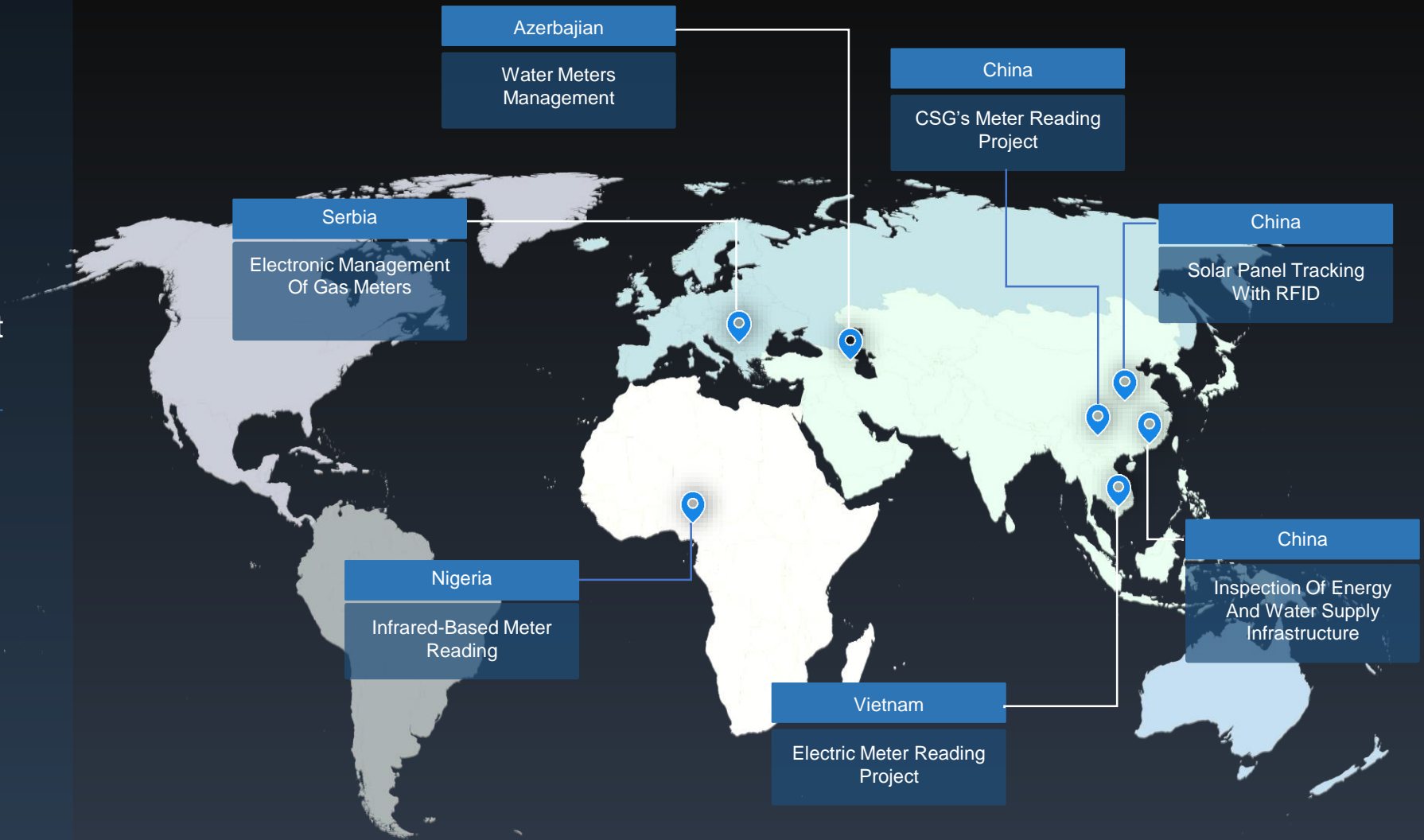
Infrared Meter Reading

Data Upload

GPS Positioning

Real-time Data Management

- Vietnam RF Electric Meter Reading
- CSG's Intelligent Meter Reading Project
- Infrared-Based Automatic Meter Reading In Nigeria
- Electronic Management Of Gas Meters In Serbia
- Management Of Water Meters In Azerbaijan
- Solar Panel Tracking With RFID In China
- Inspection Of Energy And Water Supply Infrastructure For Yue Gang



E

E Government

Identity Verification

Data Upload

Real-time Data Management

E.g.: Population Census / Election /

Law-enforcement / Security / EID



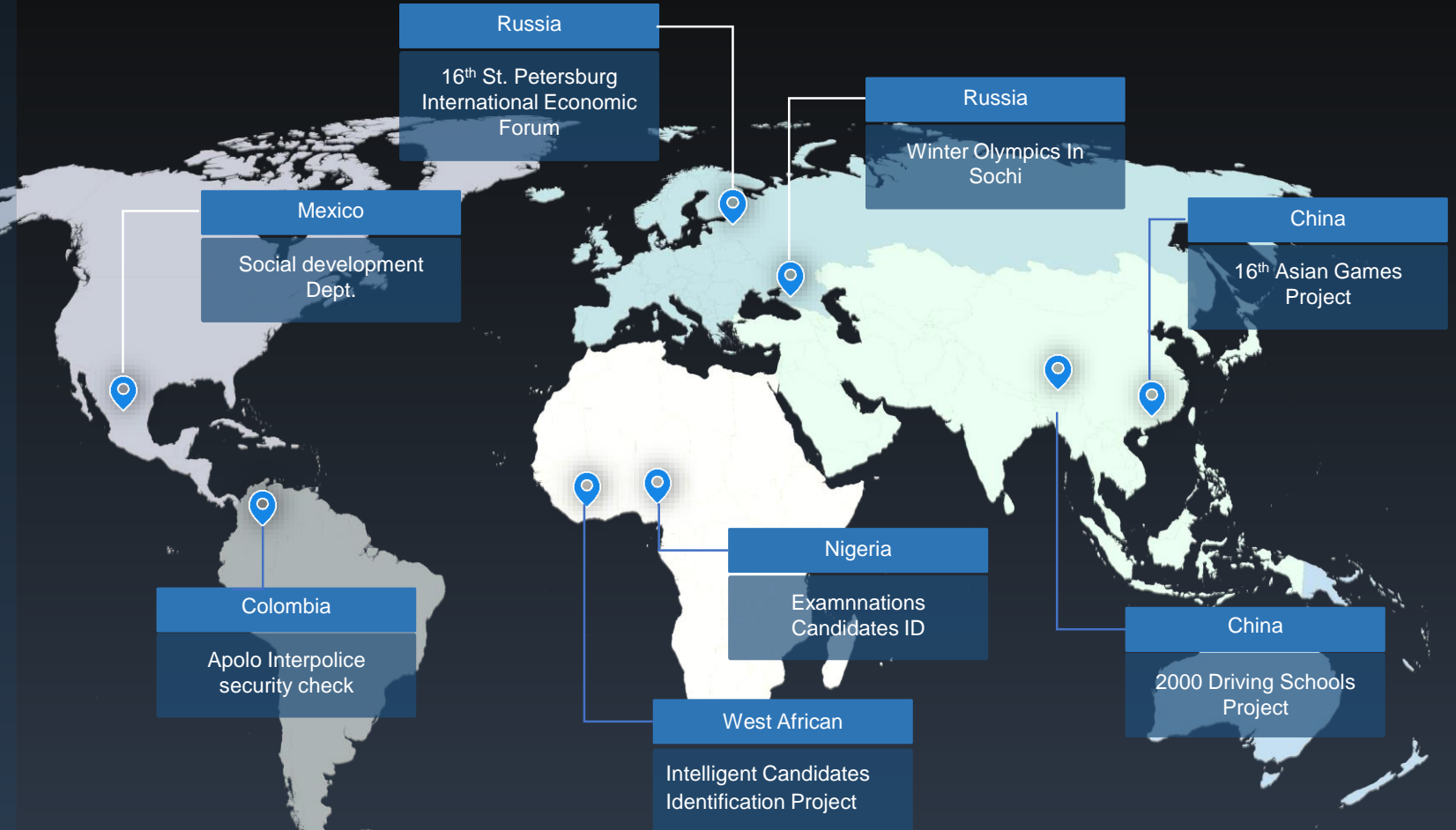
Government

Identity Verification

Data Upload

Real-time Data Management

- Chainway Helps Mexican Ministry Of Social Development To Establish The Intelligent Funding System
- Biometrics In Government Classified Information Management
- West African Examination Council Chooses Chainway For Its Intelligent Candidates Identification Project
- Vehicle Computers Deploys By Over 2000 Driving Schools In China
- E-Agriculture Project In Rubber Industry
- Ticket Inspection For The 16th St. Petersburg International Economic Forum
- Exit And Entry Administration For The 16th Asian Games
- Automatic Ticket Validation For 2014 Winter Olympics In Sochi



F

Livestock

- Feeding
- Supervision
- Delivery



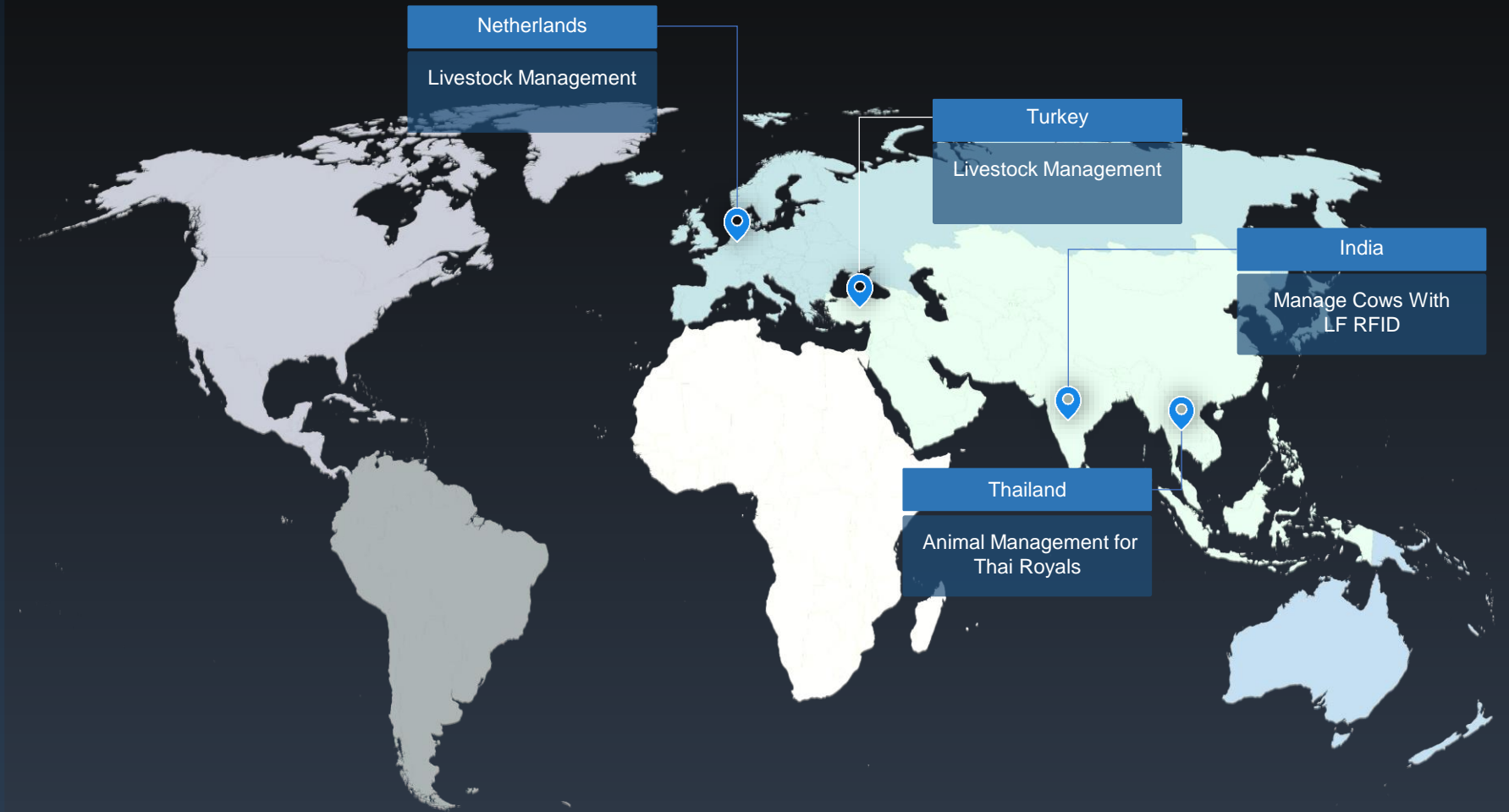
Livestock

Feeding

Supervision

Delivery

- European government Agency Manages Livestock With Chainway Handheld Computers
- Animal Management for Thai Royals
- RFID Identifies & Tracks Animals In Netherlands
- Manage Cows With LF RFID And External Antenna



Netherlands
Livestock Management

Turkey
Livestock Management

India
Manage Cows With
LF RFID

Thailand
Animal Management for
Thai Royals

CHAINWAY[®]

Leading to an Intelligent Future

Thank you



Amy Lan

Sales Manager

Skype:
+86 17710422897

MP:
+86 17710422897

Email:
amy@chainway.net

Web:
www.chainway.net

CHAINWAY[®]

Shenzhen Chainway Information Technology Co.,Ltd

9F, Building2, Phase2, Gaoxinqi Industrial Park, Liuxian 1st Rd.,
District 67, Bao'an, Shenzhen, Guangdong, China, 518102

CHAINWAY

Leading to an Intelligent Future